



Electrolux
PROFESSIONAL

**Stainless Steel Preparation
1370 mm Stainless Steel Shelving
with 4 Solid Shelves**

ITEM # _____

MODEL # _____

NAME # _____

SIS # _____

AIA # _____



132947 (NSC1370)

Stainless steel Shelving with
4 solid shelves, 1370mm

Short Form Specification

Item No. _____

Made in stainless steel. The two intermediate shelves are height-adjustable. Load capacity per shelf: average of 150 kg/m², evenly distributed.

Construction

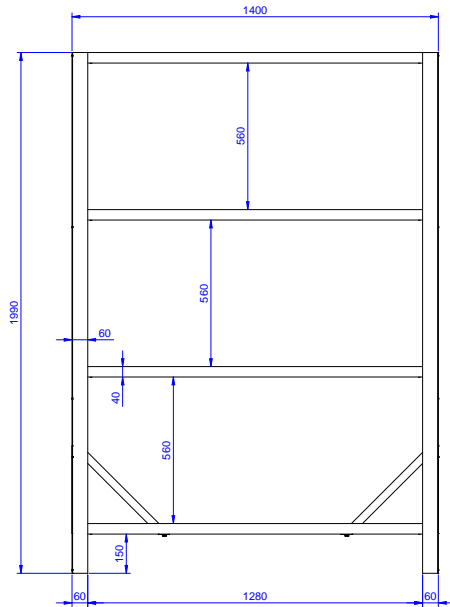
- Designed to bear a maximum total load of 600kg; the load can be positioned at various heights thanks to the shelves.
- Model constructed entirely in stainless steel, with solid stainless steel shelves.

APPROVAL: _____

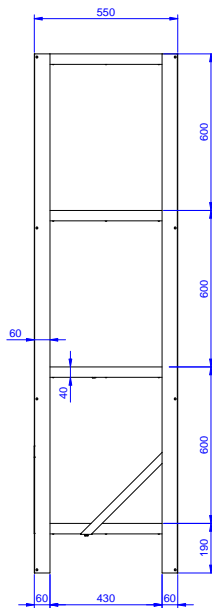


Experience the Excellence
www.electroluxprofessional.com

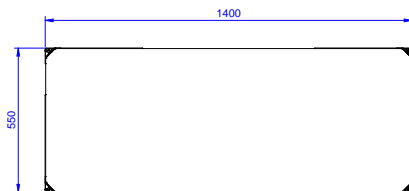
Front



Side



Top



Key Information:

External dimensions, Width:	1400 mm
132947 (NSC1370)	
External dimensions, Depth:	550 mm
External dimensions, Height:	1990 mm
Max loading weight:	600 Kg kg
Shelves number:	
Net weight:	41 kg